

MODEL 280



Surface Mount Traffic Controller



The Model 280 Traffic Controller is a heavy-duty surface mount “Directional Enforcer”. It allows traffic in one direction only and can be used as a free entrance or exit to your parking facility. The Model 280 is 36" wide.

- ALLOWS TRAFFIC IN ONE DIRECTION ONLY
- SURFACE MOUNT INSTALLATION – MOUNTS TO EXISTING ROADWAY
- NO EXCAVATION REQUIRED
- 3 FT. WIDE SECTIONS TO ACCOMMODATE ANY LANE WIDTH
- LOW PROFILE FOR SMOOTH PASSAGE
- PAINTED SAFETY RED



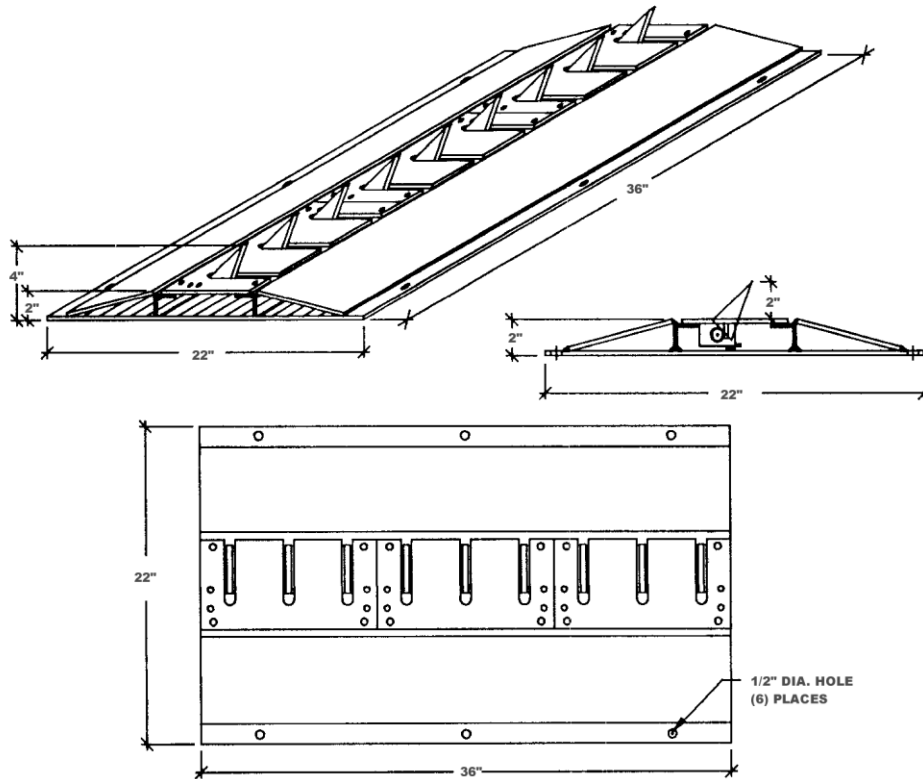
ENGINEERED PARKING SYSTEMS

25010 AVENUE TIBBITTS, VALENCIA, CA 91355
PHONE (661) 294-0778 (800) EPSINFO (377-4636) FAX (661) 294-0674
www.epsinfo.com

MODEL 280 TRAFFIC CONTROLLER

INSTALLATION GUIDELINES

1. Install the traffic controller perpendicular to traffic flow. If vehicles cross the traffic controller at an angle other than 90° the spikes may cause damage to sidewalls of tires.
2. The maximum speed vehicles may cross the traffic controller is 5 MPH. Excessive wear of the spikes and top plate and/or broken springs will result from speeds greater than 5 MPH.
3. The traffic controller should be installed in a location where the least amount of water will drain in to the unit. Make sure there is adequate drainage under the unit.
4. Make sure the unit is not installed on a slope where it is possible for vehicles to roll back on to the traffic controller.
5. Keep pedestrians away from the traffic controller.
6. Routine maintenance should be performed periodically to ensure that debris is not accumulating in the unit and that water is draining properly.
7. Provide adequate night time illumination of the unit together with a clear sign warning of it's presence and potential tire damage



ENGINEERED PARKING SYSTEMS

25010 AVENUE TIBBITTS, VALENCIA, CA 91355
PHONE (661) 294-0778 (800) EPSINFO (377-4636) FAX (661) 294-0674
www.epsinfo.com